

# VITREX F10

## SWING DOOR • 2 SHUTTERS • EI<sub>2</sub> 90 – EI<sub>2</sub> 120

Fire resistant glass door in aluminium named “Vitrex F10” and certified according the UNI EN 1634-1:2014 norm is made of:

**FRAME** on the 4 sides is made by a strong metallic structure in steel protected to guarantee the maximum fire resistance performance and distinguished by a steel aluminum sheet.

**DOOR AND WINDOWS THICKNESS:** 102 mm.

**FIRE RESISTANT GLASS** is installed and made of stratified glass with inserted intumescent material.

**TERMICAL GUARD:** n. 4.

**LOCK** nocturnal lock to slip with 3 keys.

**GASKET** rebate cold smoke/perimetral self expanding.

**DOOR CLOSING:** “at floor”, suitably sized that allows to the shutter a rotary motion on a vertical axis on one side of the door (chosen by the customer) fig 1. or on a vertical axis on both sides fig 2. The closing action is completely controlled hydraulically and with a pressure compensation equipment for the constant brake or door closer with rotating floor support.

**WINDOWS AND DOOR FINISHING:** RAL finishing upon request (standard: silver OX).

**ASSEMBLY** dowelled.

**AUTOMATION** upon request.

**MAXIMUM OPENING:** 90°.

**APPROXIMATE WEIGHT:** 100-105 kg/mq.

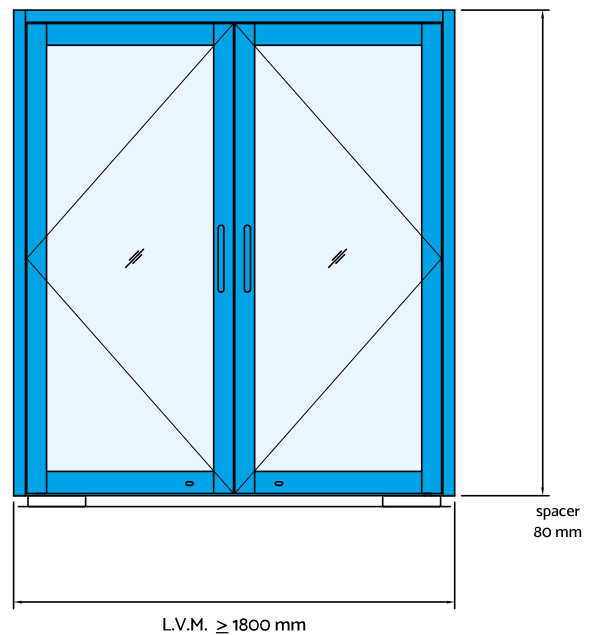


FIG. 1

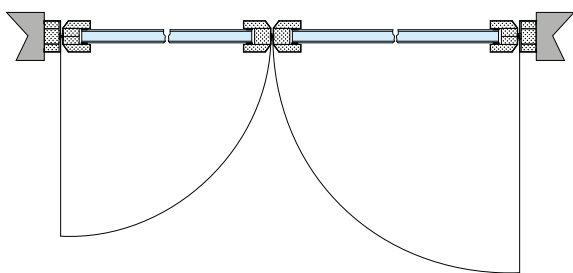
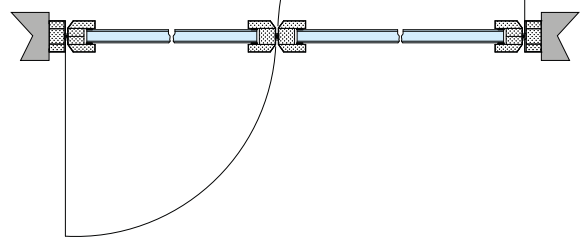


FIG. 2



**DIMENSION LIMIT:**  
FM = (L X H) = 2600 X 2500 mm.

**NB: THE INSTALLATION** must be done only by highly qualified personnel.  
\*on precast previously walled-in by the custode  
\*with noggs.

Download this technical sheet from [www.glassfire.it](http://www.glassfire.it)



Every glass window has an identification plate indicating EI<sub>2</sub> classification, certification authority data, producer data, homologation number and progressive number.